



Imaging for Carmen[®]

Brief Guide



Not all images are usable for ANPR, or OCR. In fact, the CARMEN[®] engine and ANPR/OCR in general require a set of specific criteria to be met when it comes to images. Thankfully, these criteria can be well defined. This guide will present these criteria and will also discuss them in detail.

Imaging for Carmen®

BRIEF GUIDE

Document version: 2026.06.04.

Table of Contents

INTRODUCTION	3
1. GOOD CONTRAST	4
2. SHARP IMAGE.....	4
3. CHARACTER SIZE AND RESOLUTION.....	5
3.1. HIGH RESOLUTION.....	5
3.2. LOW RESOLUTION	5
3.3. MINIMUM AND OPTIMAL CHARACTER SIZE	6
4. LOW DISTORTION.....	8
5. EXAMPLES TO AVOID (NOT OPTIMAL FOR ANPR)	8
6. SUMMARY	9
7. USING CROPPED IMAGES FOR ANPR.....	10
CONTACT INFORMATION.....	12

INTRODUCTION

The image that is loaded into the CARMEN® engine can be provided by an image source of any kind. It could be supplied by either a digitized analog signal or by a digital camera. However, what is more important is that not all images are usable for ANPR (Automatic Number Plate Recognition), or OCR (Optical Character Recognition). In fact, the CARMEN® engine and ANPR/OCR in general require a set of specific criteria to be met when it comes to images. Thankfully, these criteria can be well defined. This guide will present these criteria and will also discuss them in detail.

Note

In general, when discussing ANPR systems, the phrase "good quality images" refers to the fact that the images used meet the criteria detailed in this document.

Note

This document is concentrating on optimal image requirements for ANPR, but everything is applied for OCR side as well.



1. GOOD CONTRAST

In order to be able to differentiate the character from the background, there has to be a certain contrast between the two. The criteria for this is not for high contrast, but rather, a consecutive average difference. Of course, the higher the contrast the better, but having low dispersion in contrast ratio (minimal blur on the edges) is more important.

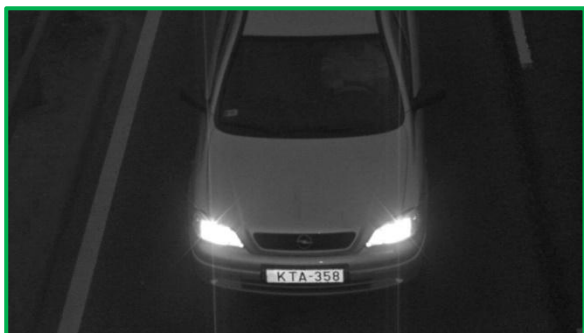


Figure 1: An image with good contrast. The characters on the license plate are clear. ✓



Figure 2: An overexposed image on which the license plate is barely visible. ✗

2. SHARP IMAGE

Having adequately sharp images is also crucial. One general rule that can be applied to OCR is that if the characters can be recognized by a human, then the engine will also recognize them. This rule applies the other way around as well: if one cannot read the characters properly and easily, there is a low probability that the engine will recognize the license plate. It is also worth noting that blurring can be caused by many other factors and not just small image size.

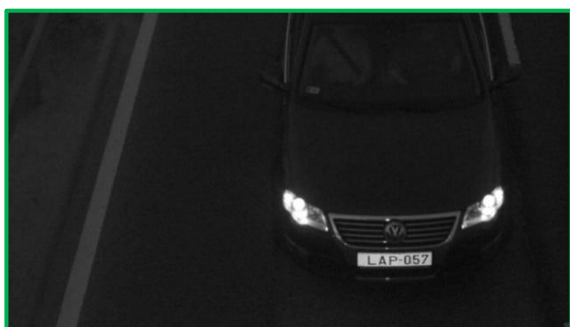


Figure 3: An adequately sharp image. ✓

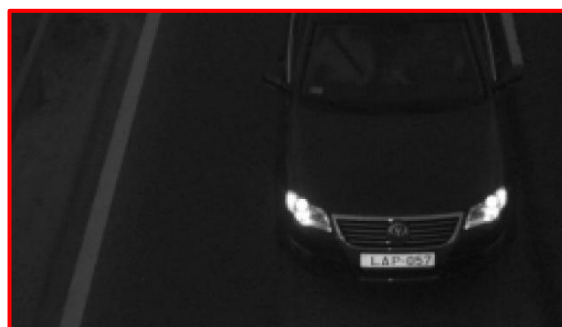


Figure 4: A blurry image with a hard to read license plate. ✗

3. CHARACTER SIZE AND RESOLUTION

Optimal size of characters on the given image is essential. In terms of character size there is one typical misconception. Many think that the higher the resolution, the better. This statement however, is not true. Neither images with too high or too low resolution will work properly.

3.1. HIGH RESOLUTION

High-resolution (macro) images contain a lot of redundant data. Characters can be easily defined based on the edges of a character. No other information is needed. So much so, that the pixels within a character are irrelevant in terms of shape/pattern recognition. These are just pixels that waste the resources of computation. Therefore, resolution is optimized for a certain character size. Although this size can be adjusted, it has to be noted that adjusting the default character size can cause problems if characters are too tall.



Figure 3: A good image with adequate resolution, not too high, not too low. ✓



Figure 4: Macro image with enormous amounts of redundant data. The character size is about 55×105 pixels. ✗

3.2. LOW RESOLUTION

Images containing less information than what the engine needs should be considered as low-resolution images. Of course, it has to be noted that even if the characters are smaller in resolution than the required minimum, the engine may deliver correct results, but it will not consistently recognize these images. If one would feed the engine a few thousand low resolution images, the recognition rate would drop over time.

3.3. MINIMUM AND OPTIMAL CHARACTER SIZE

The optimal size of a character for an ANPR task is at least 10 pixels in height for Latin characters. For Arabic characters or North America region license plates the minimum character height is 20 pixels.

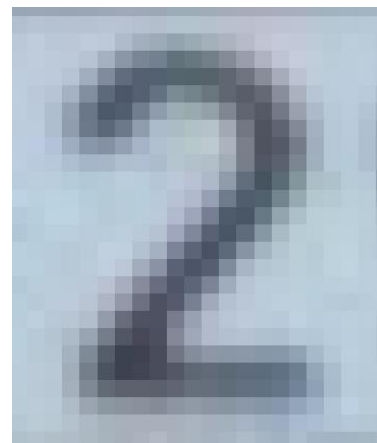


Figure 5: Optimal character size with optimal resolution for OCR: HD image. ✓

A general rule of OCR is that the smallest unit that defines the recognized object has to be 2x2 pixels. In terms of ANPR, the smallest unit is the width of the line that comprises the characters on the license plate. In order to get this line width, the minimum height of the characters has to be 10 pixels in case of Latin characters.

The characters can of course be taller (and will be if higher resolution cameras are used), the 10 pixels height is just the minimum value. But do note that if the character height is less than 10 pixels, then the recognition rate will drop drastically. The same is true if the characters are too high. At around 70-80 pixels, the recognition will again drop and sooner or later will reach 0%.

The optimal character size is between 20 and 60 pixels tall.



Figure 8: Example of a license plate with Arabic characters.

Arabic, Chinese, Korean etc. license plates however are an exception to the 10 pixels minimum rule. For the engine to reliably recognize these characters, a higher resolution is needed. The rule applies to all license plate types where the text contains non-Latin characters. There are multiple reasons for this, the easiest and most simple example is the Arabic "0" (zero), which is a simple dot. The CARMEN® engine is very robust; therefore, it has the capability of filtering noise from the image. A dot, if it is too small, can potentially be recognized by the engine as noise in the image. In case of North America region plates, the same applies because of the stacked letters and Motorcycle smaller license plates.



Figure 9: Examples of North American license plates with stacked letters

However, if it is sufficiently large, CARMEN® will recognize it more effectively without making mistakes. The minimum character height in case of non-Latin characters and North American license plates is 20 pixels.

The optimal character size for non-Latin characters or North American license plates is between 30 and 80 pixels in height.

If you need more detailed information about sizing please read our [Reference Manual](#) here.

For ANPR: [link](#)

For OCR: [link](#)

4. LOW DISTORTION

The camera which acts as the image source for OCR can be installed in many ways. There exist multiple installation positions that can help in providing optimal images with minimal distortion. However, there are many cases when the camera cannot be installed in these positions causing the object (license plate) to become distorted on the image. This is why the OCR engine was built to tolerate a 30° angle. However, if the pan or tilt angles of the camera exceed 30°, distortion may significantly reduce recognition and performance rates.

5. EXAMPLES TO AVOID (NOT OPTIMAL FOR ANPR)



LOW SPATIAL RESOLUTION



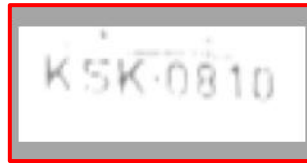
LOW CONTRAST



HIGH DISTORTION



BLURRED IMAGE



OVEREXPOSURE



BAD LIGHTING CONDITIONS (SHADOW AND STRONG LIGHT)

6. SUMMARY

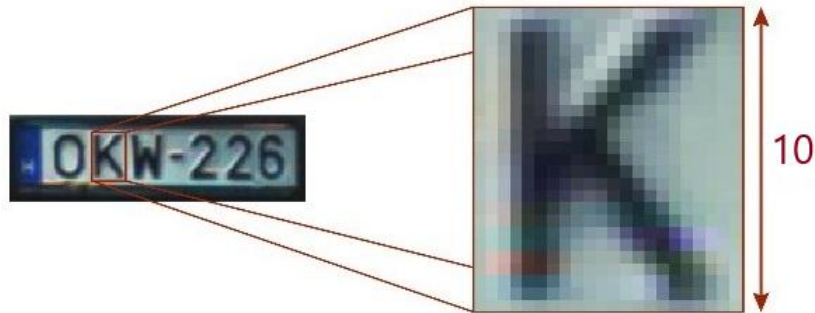


Figure 10: Minimum character height.

To summarize, the images provided to the engine should meet the following requirements:

- A consecutive average difference in contrast.
- Adequate sharpness.
- Minimal distortion.
- Is taken under good lighting conditions
- The picture has to contain the whole license plate on which the characters are:
 - at least 10 px high in case of Latin characters
 - at least 20 px high in case of Arabic, Chinese, or any other special characters
 - not more than 80px in either case

7. USING CROPPED IMAGES FOR ANPR

In some cases, there may be a need to crop the source images. While it is possible to use cropped images, these also have a set of criteria that have to be met:

- All the previously mentioned rules apply to the cropped image as well. Therefore, the image should contain a license plate:
 - with good sharpness
 - with high contrast
 - under good lighting conditions
- The characters have to be at least 10 pixels high (20 in case of non-Latin characters) and the line width of the characters has to be at least 2 pixels.
- When cropping the images, make sure that on the cropped image there is some space between the license plate and the edge of the image. The engine will not recognize characters on pictures that only contain the license plate and nothing else. In very simple terms, do not crop the images at the edge of the license plates.



EXAMPLE IMAGES:

PROPER IMAGES



IMPROPER IMAGES



The examples clearly demonstrate that a proper image is not cropped at the edges of the license plate. Some space is left between the license plate and the edge of the image.

If the above-mentioned criteria are met, then the engine should have no issues with recognition when cropped images are used.

CONTACT INFORMATION

Headquarters:

Adaptive Recognition, Hungary Inc.
Alkotás utca 41 HU
1123 Budapest Hungary
Web: adaptiverecognition.com

Service Address:

Adaptive Recognition, Hungary Inc.
Ipari Park HRSZ1113/1 HU
2074 Perbál Hungary
Web: adaptiverecognition.com/support/

Adaptive Recognition Hungary Technical Support System (ATSS) is designed to provide you the fastest and most proficient assistance, so you can quickly get back to business.

Information regarding your hardware, latest software updates and manuals are easily accessible for customers via our [Documents Site \(www.adaptiverecognition.com/doc\)](http://www.adaptiverecognition.com/doc) after a quick registration.

New User

If this is your first online support request, please contact your sales representative to register you in our Support System. More help [here \(www.adaptiverecognition.com/support/\)](http://www.adaptiverecognition.com/support/)!

Returning User

All registered ATSS customers receive a personal access link via e-mail. If you previously received a confirmation message from ATSS, it contains the embedded link that allows you to securely enter the support site.

