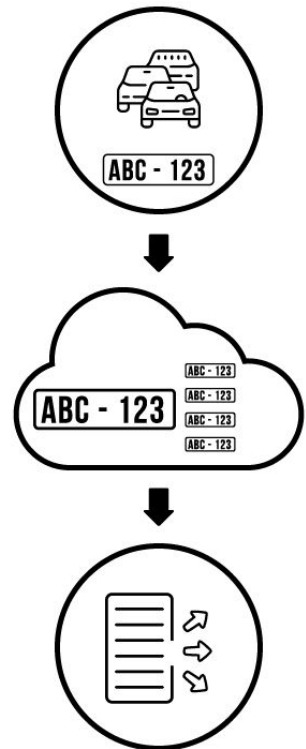
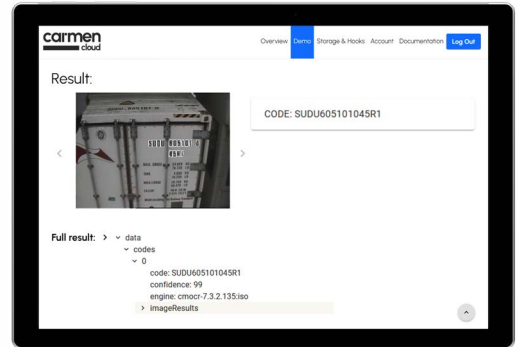
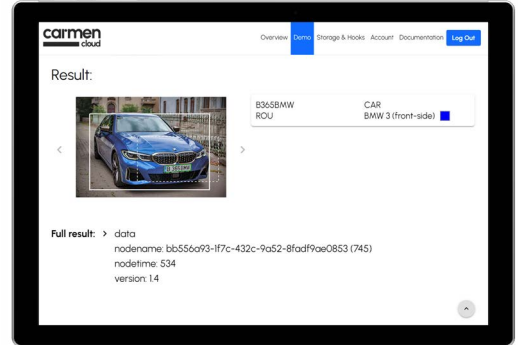


## CARMEN® CLOUD

### SaaS ANPR and vehicle analytics API

#### CARMEN CLOUD - Cloud API

Purpose	Cloud-based vehicle license plate, make & model, Hazmat sign (ADR and eADR), Railway, Container and Commercial Vehicle code recognition API for any intelligent traffic system, security, and access control environment.	
Supported operating systems	Any (TCP/IP connection based API)	
Supported platforms	any with network layer	
Minimum system requirements	TCP/IP connection, 4G bandwidth	
Input	Still image (BMP   PNG   JPEG   JPEG2K   RAW) Upt to 10MB Suggested image due to minimizing network traffic: up to 200kbyte compressed type containing vehicle and LP	
Output Data JSON Dataformat	ANPR Data License plate number Country of origin Time stamp Confidence level in percentage Confidence levels for each character Vehicle data: - make - model - color - category - bodytype	OCR Data Timestamp Confidence level in percentage. Confidence levels for each character Checksum (if available)
Output Formats	JSON dataformat	
Development tools Supported programming languages under Windows	Any programming language which has REST API support html, javascript, php, ruby, java, python, c# etc	
Supported programming languages under Linux	Same as for Windows	
In the box	Access to Development Portal API key, free trial, sample codes, Java SDK Subscription through AWS Marketplace and Stripe (tbd)	
Available tools	Development Portal: Demo page	
Engine update availability	Quarterly updates by Adaptive Recognition	
Licensing	SaaS, pay as you go packages on AWS Marketplace, Stripe (tbd)	
Available versions	Free trial: 1000 requests / month From 10k up to 1280k / month requests packages	
DevOps engine updates, bug fixes, version control, availability mgmt	Done by Adaptive Recognition	



For projects with unique requirements, our software options can be expanded and customized (e.g. private cloud). Additionally, hardware specifications can be adjusted to meet the specific needs of your project. Please contact our sales team to discuss tailored solutions.

