

Combo Smart Kiosk Passport Reader

Imaging

Active scan area	129 x 89 mm
Illumination sources	LED visible white, Infra-red (B900), Ultra-violet (UVA)
Provided images	Visible, IR, OVD image, glare-free image, UV image
Image formats	BMP, JPG, JPG2000, PNG
Image color depth	24 bits/pixels [RGB, 8 bits/pixels (IR image)]

Reading Capability

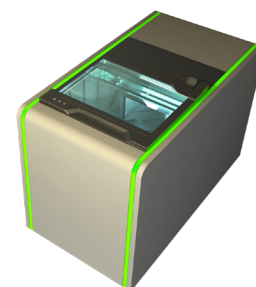
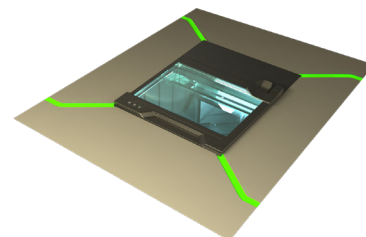
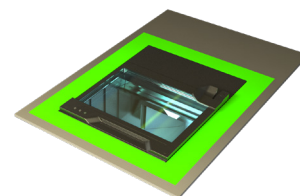
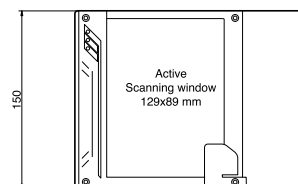
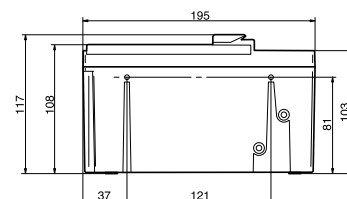
Automatic Document Detection (ADD)	YES
Reflection Removal (RR)	YES
Adaptive Light Control	YES
ICAO MRZ reading	ICAO compliant documents per ICAO 9303 specification Part 1, Part 1 _{v2} , Part 2, Part 3 and Part 3 _{v2} for Type ID-1, ID-2 and ID-3 MRZ Optical Character Recognition
VIZ reading	Available with Adaptive Recognition VIZ OCR software
Barcode reading	1D: UPC-A, EAN8, EAN13, Code39, Code128 and Interleaved 2 of 5 (ITF) 2D: PDF 417, Data Matrix, QR Code, Aztec Code AAMVA compliant PDF417 and IATA BCBP
RFID reading**	Reading and writing contactless ICs according to: ISO 14443 Type A & B, BSI TR-03105 All standardized rates up to 848 Kbps

Programming & Interfaces

Supported Operating Systems	Windows 7, 8, 8.1, 10 + Linux (ask for details)
Software Development Kit (SDK)	Complete SDK including DLLs and demo programs
Programming languages	C/C++, C#, Visual Basic 6.0, Delphi, VB.NET, Java
General interfaces	AR native, Twain and Acuant AssureID
RFID functions (where applicable)**	ICAO Doc. 9303 LDS 1.7, LDS 1.8, ISO 18013 (Driver License) PKI 1.1, BAC, EAC, EAC2.0, PACE, PACE-CAM, SAC, AA, PA, TA, CA, BAP, EAP
Status indicators	Four programmable status LEDs (blue, green, yellow, red)
Advanced Document Authentication (included in standard SDK)	Data consistency checks: MRZ, RFID** R B900 and UV dull paper check*, Bearer's printed photo vs. RFID DG2**
Additional Authentication Options (available as optional SDK)	VIZ and non-ICAO document reading Automated verification based on document specific security features in visible white, R and UVA*
PC connection	USB 2.0 high speed (USB 3.0 compatible)
Firmware upgrade	Automatic, via USB

Mechanical and Other Data

Size with passport fixer	150 mm x 195 mm x 117 mm (5.90" x 7.67" x 4.60")
Size without passport fixer	150 mm x 195 mm x 108 mm (5.90" x 7.67" x 4.25")
Weight	1.01 kg (2.15 lbs.)
Operating temperature	5 °C to 45 °C (45 °F to 113 °F)
Operating humidity	0-90 % (non-condensing)
Power supply (V DC)	12 V DC
Max. power consumption	0.8 A / 9.6 W
Case housing	Sturdy ABS-PC plastic
Window glass	5.5 mm (0.22") normal glass
Programmable status LEDs	3
Compliances	FCC, CE, WEEE, RoHS
Maintenance	No moving parts, maintenance-free operation
Warranty	3-year warranty, upgradeable



** available in type 'R' models

Technical specifications are subject to change without prior notice. This document does not constitute an offer.

3-year warranty
Made in EU



requestinfo@adaptiveRecognition.com
www.adaptiverecognition.com

© Copyright Adaptive Recognition Inc.
All rights reserved.

Release date: 05.06.2023