



# Carmen® BOX

## Installation Guide



This guide contains an overview of the hardware and required components, suggested scenarios and step-by-step guide for installation, and safety and maintenance instructions.

# Carmen® BOX

## INSTALLATION GUIDE

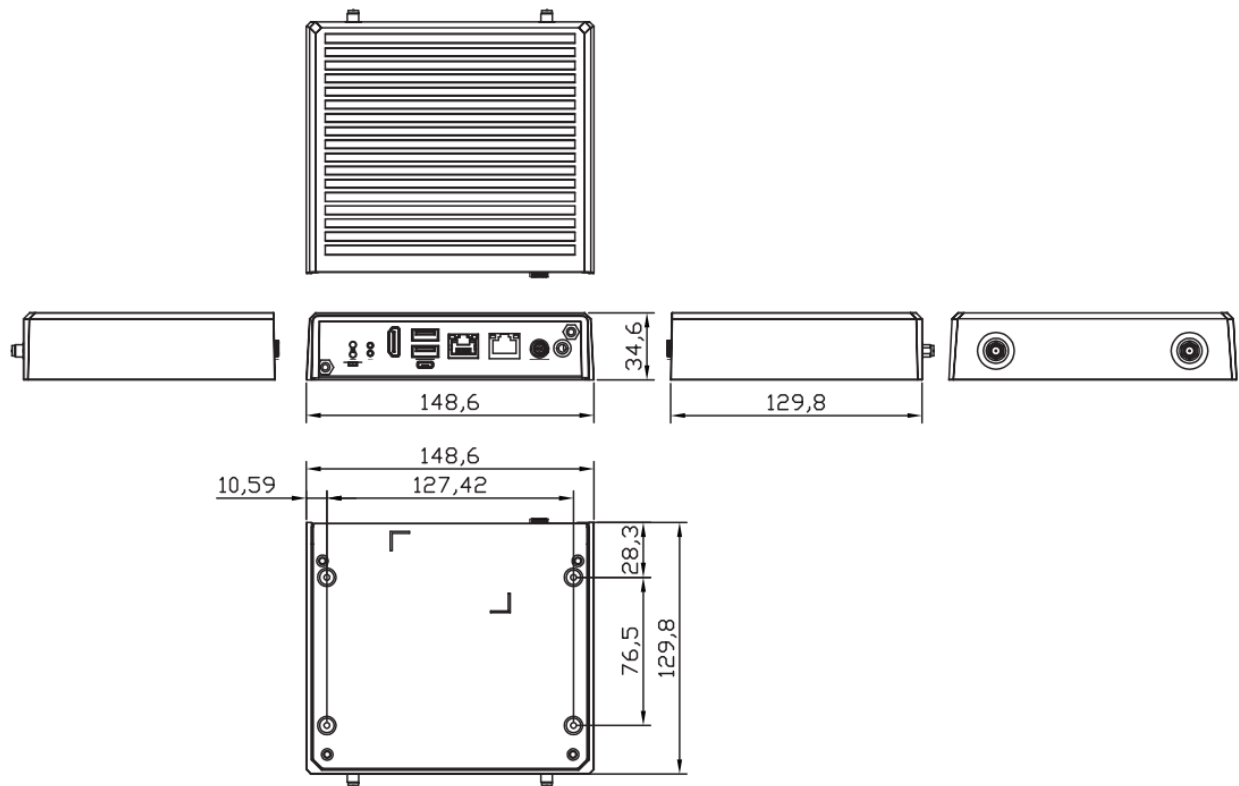
Document version: 2025.04.01.

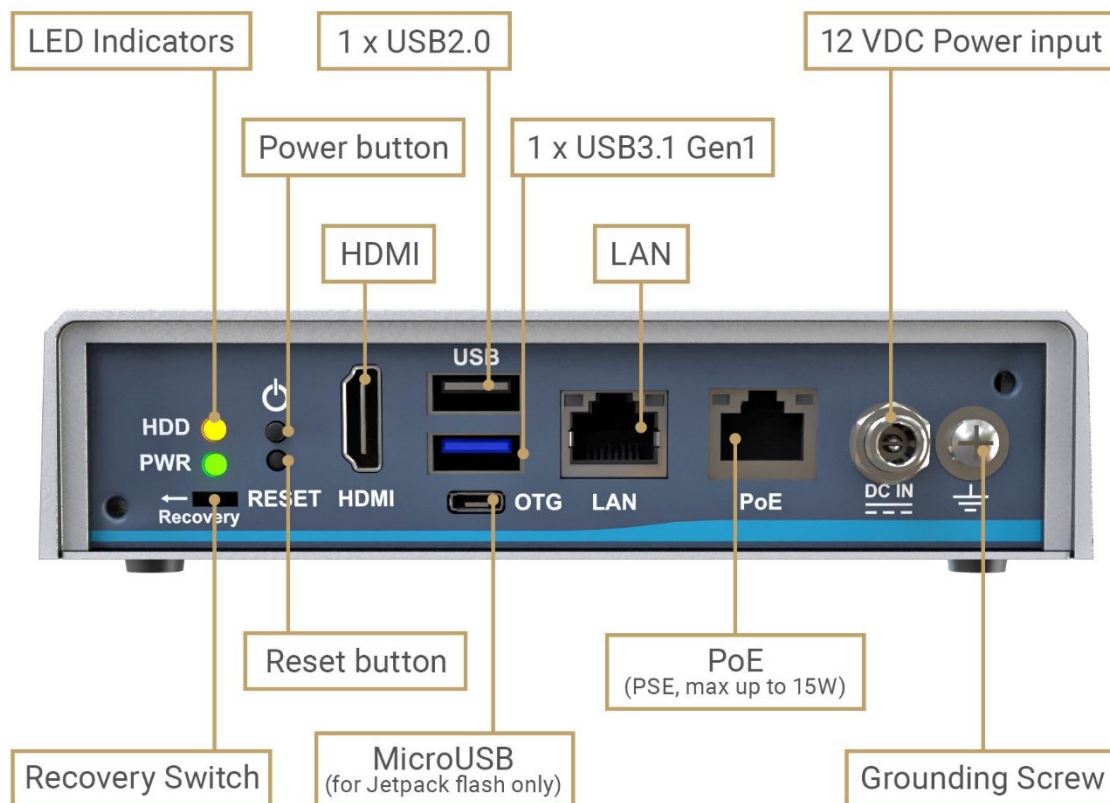
### Table of Contents

1.	HARDWARE OVERVIEW.....	3
2.	REQUIRED COMPONENTS.....	5
3.	DEVICE INSTALLATION.....	6
3.1.	ACCESSING THE WEB INTERFACE.....	7
4.	SAFETY.....	9
5.	APPENDIX.....	10
5.1.	INSTALLING THE MICROSD CARD.....	10
5.2.	RESET TO FACTORY DEFAULT.....	12
5.3.	DEVICE RESTART.....	12
5.4.	POSITION OF THE STICKER.....	13
5.5.	WALL MOUNT BRACKET DIMENSION (SCREW: M3 *4L 4PCS).....	14
	CONTACT INFORMATION.....	15



# 1. HARDWARE OVERVIEW

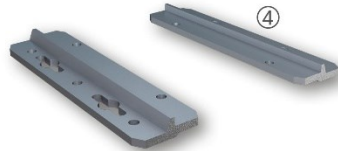




PWR LED	It lights up and will remain steady while the system is powered on.
HDD LED	The Yellow LED is linked to Solid-state Drive (SSD) activity signal. LED flashes every time SSD is accessed.
Power button	Allows users to turn the device on or to force the system off (by pressing the button for more than 10 seconds). The device switches on automatically when it receives power.
Reset button	Do not use it. If you forget the device's password, see "Reset to factory default" section.
Recovery switch	Do not use it. Removes the Carmen Box software from the device.
HDMI	Do not use it. There is not any useful info/image on this port.
OTG - MicroUSB	Do not use it.
USB 2.0 port (black)	You can use it, but the USB3 port is better for storage.
USB 3.1 Gen1 port (blue)	Connect an USB3 capable storage device here.
LAN	RJ-45 connector for 10/100/1000 Base-T Ethernet port.
PoE	RJ-45 connector for 10/100/1000 Base-T Ethernet port with PoE (IEEE 802.3af class 3, max. 15W, non-isolated) – connect your camera here.
Power input	12 V DC jack with screw. Firmly insert at least 60W adapter into this connector. Loose connection may cause system instability and make sure all components/devices are properly installed before connecting.
Grounding screw	Ground the device using this screw.

## 2. REQUIRED COMPONENTS

- ① AI Edge Network Device
- ② ANPR Software Package (Preinstalled)
- ③ ANPR Engine
- ④ Wall Mounting Kit
- ⑤ Power adapter/cord



### In the box:

- Carmen® BOX
- Power adapter/cord (12 VDC, 5 A)
- Wall Mounting Kit
- 8 GB microSD card

### Assets to be provided by the Customer:

- Philips screwdriver
- Tools for applied mounting

### 3. DEVICE INSTALLATION

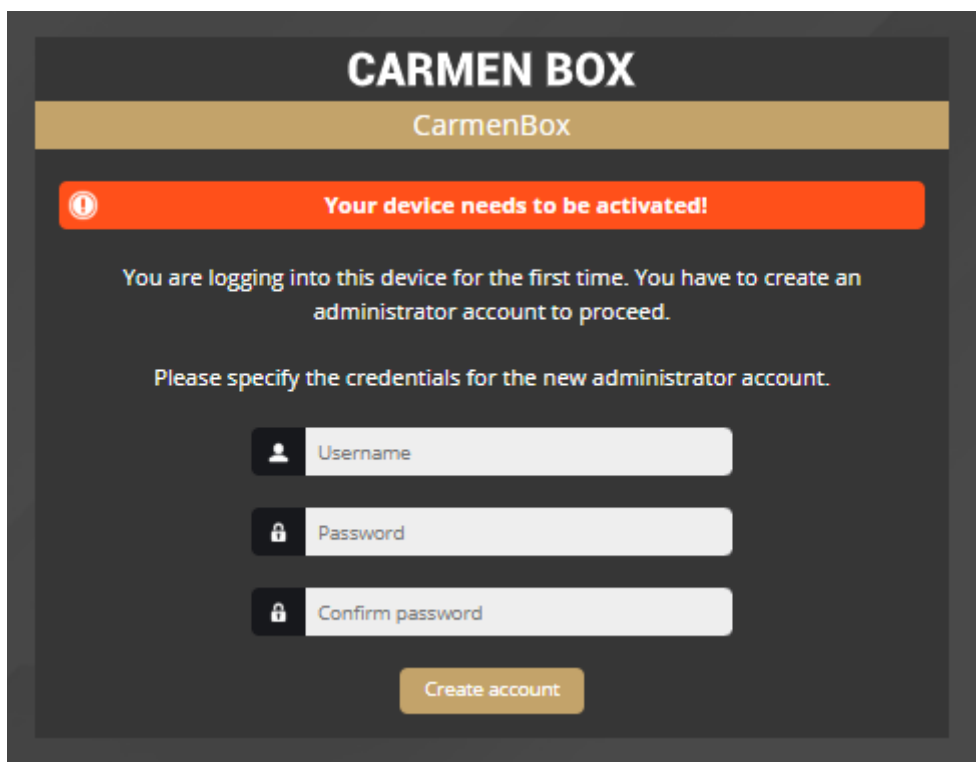
1. Mount the device into a weatherproof cabinet near the connected camera or place it in your server room. Consider the temperature tolerance and IP protection of the device (-30°C to +60°C; IP40).
  - a. Provide uninterruptible power to the device's **power supply**. The Carmen Box device cannot work with PoE power supply. However it can provide PoE power to the connected camera.
  - b. Use the **LAN port** on the device to connect the device to your network.
  - c. Use the **PoE port** on the device to power and communicate with the connected camera. If your camera is far from the device on the network, and it is not connected to the device directly, use either port.
  - d. Carmen Neural Network Controller is installed in the device (miniPCIe format). Do not plug more Carmen NNC (eg. USB dongle) into the device.
2. **Find the device on the network**, then access the device's web interface
  - a. The IP address of the device is displayed on the product sticker at the bottom of the device. This is always in the format 169.254.aaa.bbb.. However, if a DHCP server is available on the network, the device will also get an IP address from the DHCP server. You can access the device from both IP addresses.
  - b. Optionally, you can use the **AR Device Tool** to locate the device on your local network.

### 3.1. ACCESSING THE WEB INTERFACE

Accessing the web interface:

1. Start a browser and enter the device IP address into the address bar of the browser.
2. You are logging into this device for the first time. You have to create an administrator account to proceed.

Please specify the credentials for the new administrator account.



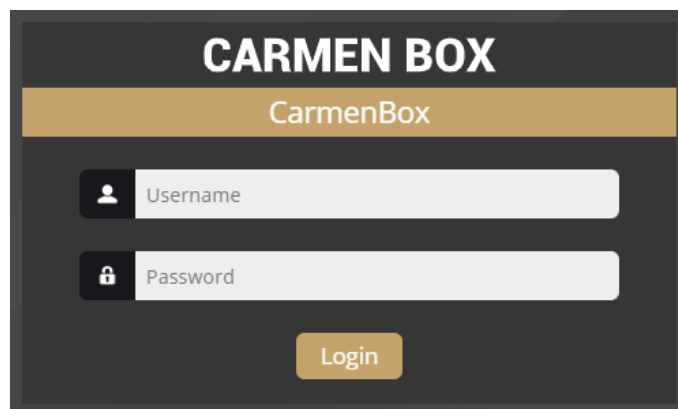
The screenshot displays the CarmenBox web interface. At the top, the text "CARMEN BOX" is prominently displayed in white on a dark background, with "CarmenBox" written below it in a smaller font. A red notification bar with a white exclamation mark icon contains the text "Your device needs to be activated!". Below this, a message states: "You are logging into this device for the first time. You have to create an administrator account to proceed." This is followed by the instruction: "Please specify the credentials for the new administrator account." There are three input fields: "Username" (with a person icon), "Password" (with a lock icon), and "Confirm password" (with a lock icon). A yellow "Create account" button is positioned at the bottom of the form.

If the device has firmware earlier than firmware version 1.6, this step is skipped. You will also be welcomed at the login screen.

The default user account is the following:

- **Username:** admin
- **Password:** admin

3. Type the username and the password on the displayed login interface and click on [Login].



4. After signing in, the web interface of the camera is displayed on which the required settings can be performed.

### Default IP Address

Carmen Box – by default – obtains its IP address from the local DHCP server. A second link-local IP address is always present on the primary network interface.

### Link-Local IP Address

The IP address of the device is displayed on the product sticker at the bottom of the device. This is always in the format 169.254.aaa.bbb..

### Finding Devices

You can find Carmen Box on the network using the [AR DeviceTool](#). Double-click on the selected device, and the Carmen Box web interface will open in the default browser.

While running, the program continuously looks for detectible devices on the network and displays them in a list with their current IP addresses. If the device does not appear, ensure that the firewall does not block the multicast protocol on the network and that the device and the PC are in the same network range.



## 4. SAFETY

### ! Important!

The device has an IP40 protection rating and must be installed in an electrical cabinet with appropriate protection for outdoor use.

### ! Important!

All screws should be hand- tightened! Do not overtighten the screws. Failures due to inappropriate installation void the warranty.



## 5. APPENDIX

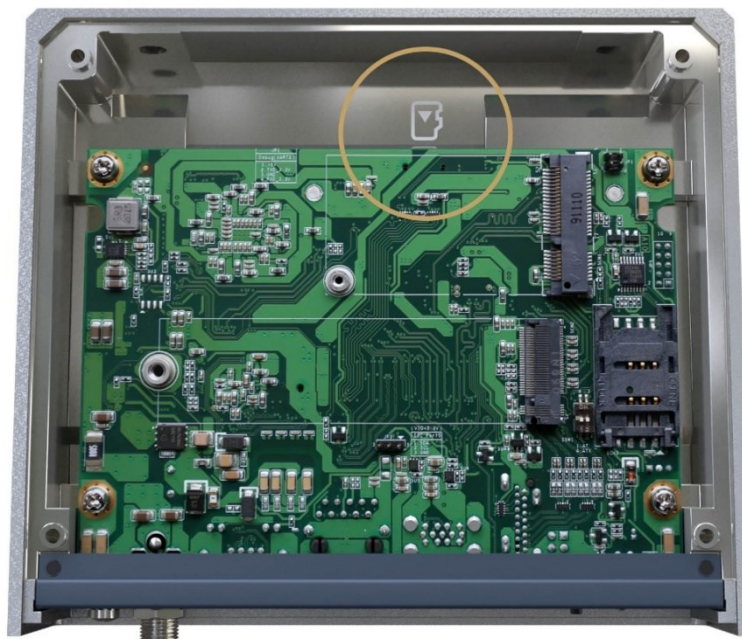
### 5.1. INSTALLING THE MICROSD CARD

Step 1: Turn off the system, and unplug the power adaptor.

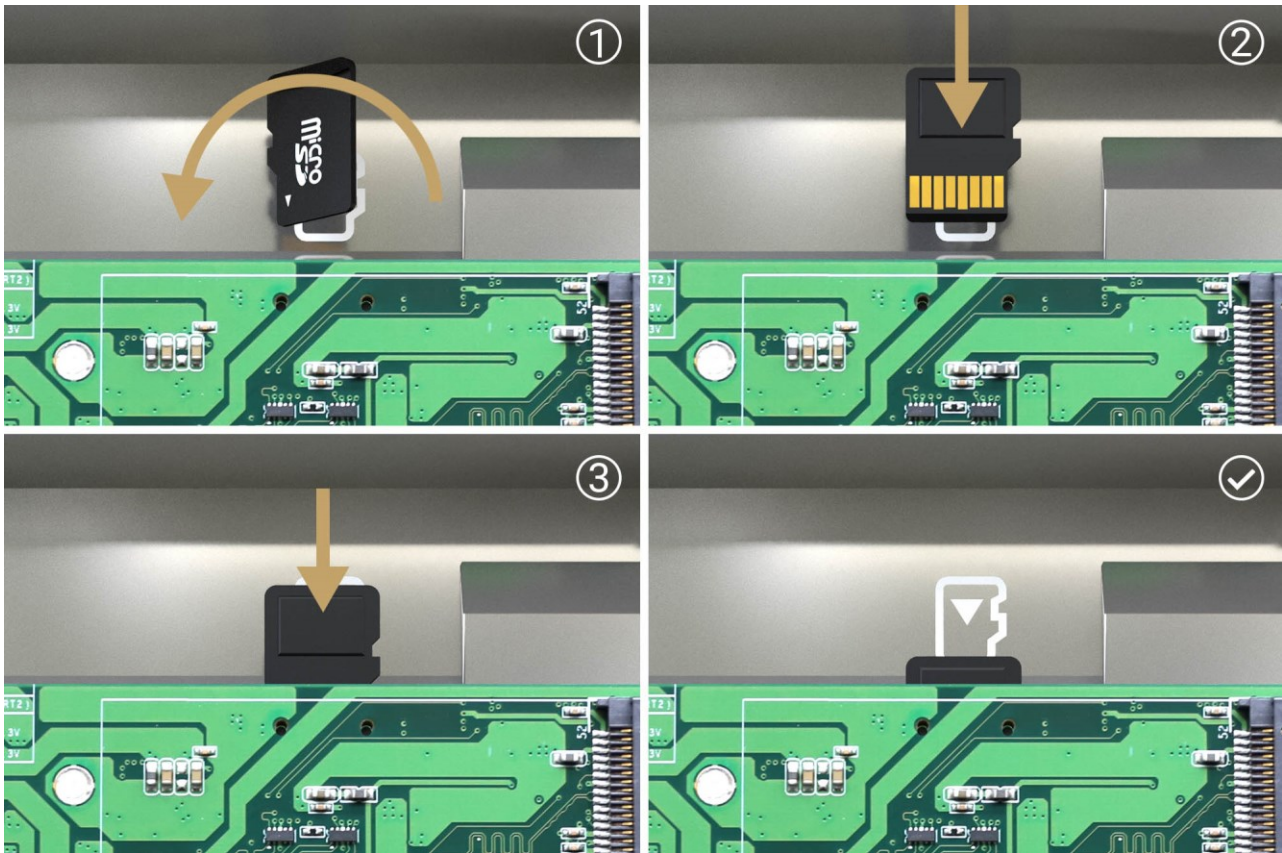
Step 2: Turn the system upside down to locate screws at the bottom side as red marked and loosen four screws.



Step 3: Remove the bottom cover, and locate MicroSD icon on the board.



Step 4: Turn the MicroSD card upside down, and hold it with fingers at a 30 degree angle up from horizontal, and then insert and press it gently.



Step 9: Mount the bottom cover, and tighten the 4 screws. Plug the power adaptor and the system automatically turns on.

Step 10: After login, select MicroSD card as a storage media in System/Storage menu.

## 5.2. RESET TO FACTORY DEFAULT

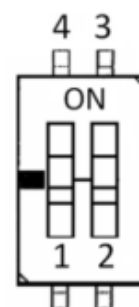
If you forget the password for the "admin" user, you will need to reset the device to factory default settings. In this case, do the following:

- Connect a USB keyboard to the device
- Press and hold Left-Control + Left-Alt + Left-Shift + R buttons for at least 5 seconds
- While pressing the above buttons, the Num-lock + Scroll-lock + Caps-lock LEDs will light up according to the keys and indicate the buttons are pressed. When the R button is pressed, all three LEDs will flash. After holding down the R button for 5 seconds, the LEDs will turn off and the reset process will begin. The buttons can be released, the keyboard disconnected and the device restarted. The default settings are applied.

## 5.3. DEVICE RESTART

The Pin1 (AT mode) of SSW1 is turn OFF, the system will be automatically power on without pressing soft power button during power input; this switch ensures achieve auto power.

Pin	Description	OnN(Default)	OFF
1	AT / ATX Mode	ATX	AT
2	NC	NC	NC





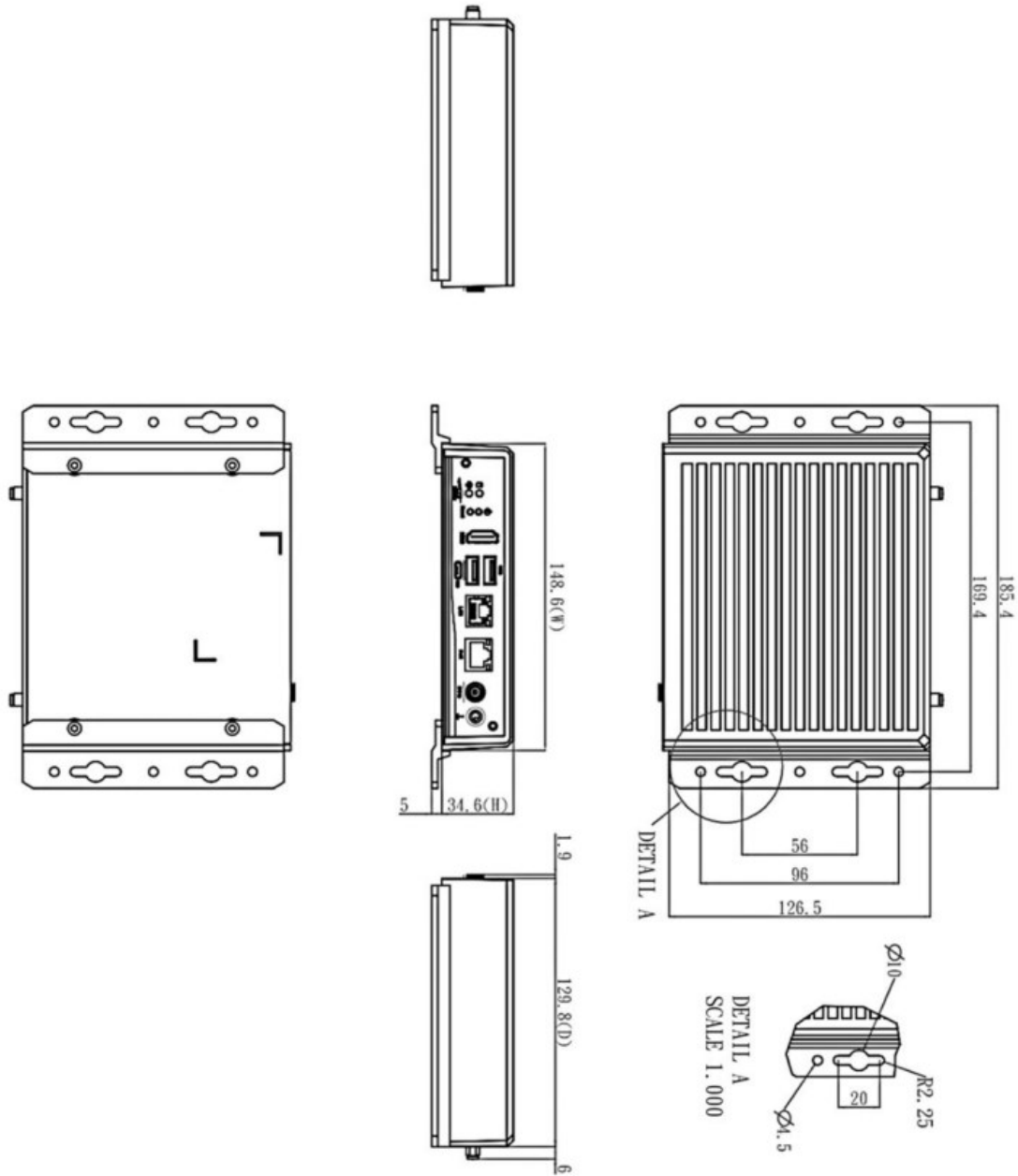
## 5.4. POSITION OF THE STICKER

The device data sticker is located at the bottom of the product and contains the following information:

- Product name
- MAC Address
- Link-local IP
- Serial Number



5.5. WALL MOUNT BRACKET DIMENSION (SCREW: M3 \*4L 4PCS)



## CONTACT INFORMATION

**Headquarters:**

Adaptive Recognition, Hungary Inc.  
Alkotás utca 41 HU  
1123 Budapest Hungary  
Web: [adaptiverecognition.com](http://adaptiverecognition.com)

**Service Address:**

Adaptive Recognition, Hungary Inc.  
Ipari Park HRSZ1113/1 HU  
2074 Perbál Hungary  
Web: [adaptiverecognition.com/support/](http://adaptiverecognition.com/support/)

Adaptive Recognition Hungary Technical Support System (ATSS) is designed to provide you the fastest and most proficient assistance, so you can quickly get back to business.

Information regarding your hardware, latest software updates and manuals are easily accessible for customers via our [Documents Site \(www.adaptiverecognition.com/doc\)](http://www.adaptiverecognition.com/doc) after a quick registration.

### New User

If this is your first online support request, please contact your sales representative to register you in our Support System. More help [here \(www.adaptiverecognition.com/support/\)](http://www.adaptiverecognition.com/support/)!

### Returning User

All registered ATSS customers receive a personal access link via e-mail. If you previously received a confirmation message from ATSS, it contains the embedded link that allows you to securely enter the support site.

