

JUNCTION BOX FOR THE 2ND GEN FREEWAYCAM FAMILY

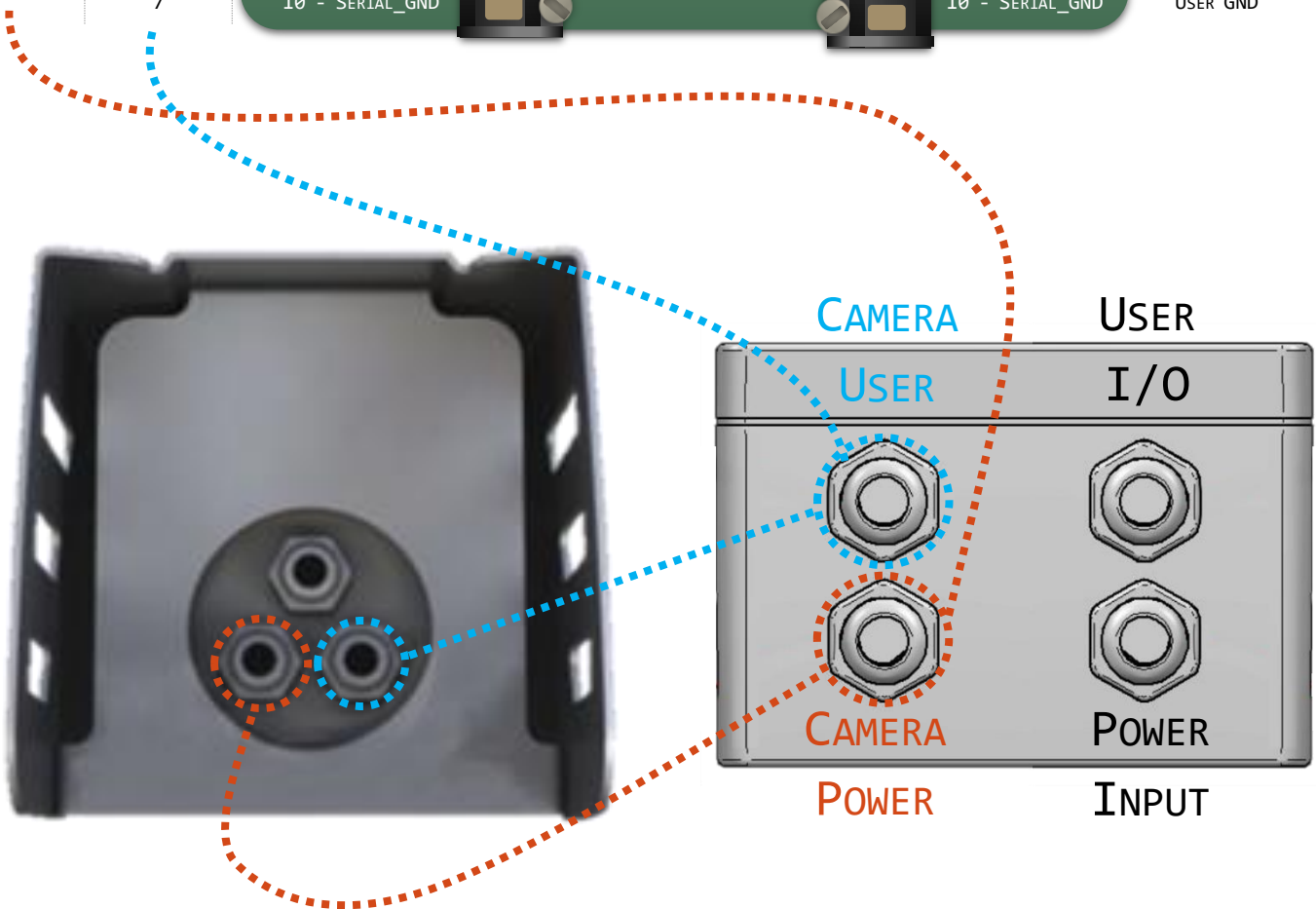


13.10.2020

A 12-PIN USER CABLE (M12 BINDER FEMALE CONNECTOR AT ONE END, AND A STRIPPED END ON THE OTHER) IS REQUIRED TO CONNECT THE CAMERA TO THE JUNCTION BOX. THIS I/O CABLE IS NOT INCLUDED BY DEFAULT WITH THE CAMERA. HOWEVER, YOU CAN PURCHASE IT DIRECTLY FROM ARH (PART #: COMBUY-OTH-0326).

CONNECTIONS

| Camera Power Cable | Camera User Cable (12-pin) | Junction Box Camera side | Junction Box User Side | User Cable |
|--------------------|----------------------------|--------------------------|------------------------|------------------|
| 1 | - | 1 - POWER OUTPUT + | 1 - POWER INPUT + | 24 V AC |
| 6 | - | 2 - POWER OUTPUT - | 2 - POWER INPUT - | 24 V AC |
| - | 1 | 3 - OPTO_OUT_G | 3 - RELAY_NC | GP OUT #1 GND |
| - | 6 | 4 - OPTO_OUT_S | 4 - RELAY_NO | GP OUT #1 SIGNAL |
| - | 4 | 5 - OPTO_IN_S | 5 - RELAY_COM | GP IN #1 SIGNAL |
| - | 5 | 6 - OPTO_IN_G | 6 - OPTO_IN_S | GP IN #2 SIGNAL |
| - | - | 7 - RS485 TERM. | 7 - OPTO_IN_G | NOT CONNECTED |
| - | 2 | 8 - SERIAL_RX | 8 - SERIAL_RX | USER SERIAL RX |
| - | 3 | 9 - SERIAL_TX | 9 - SERIAL_TX | USER SERIAL TX |
| - | 7 | 10 - SERIAL_GND | 10 - SERIAL_GND | USER GND |



MECHANICAL DATA

| | |
|--|---|
| | 24 – 28 V AC |
| Input Power | Overvoltage, overcurrent protection fuse (T 1.5A) Transient protection |
| Communication | Interface points for communication: RX, TX, GND Transient protection Optocoupler interface |
| Input | Can be configured by jumpers (see the marking on the PCB) 'Dry' or 'Contact' Dry: min. 5mA – max. 15mA (input resistance: 1kΩ) |
| Output | Galvanic isolated 1-pole relay output Optional 'Status LED' on the box: GREEN : relay ON RED : relay OFF COM, NO (Normal Open), NC (Normal Close) outputs 2A, 250 V AC / 24 V DC Min. 10 ⁵ switching cycles Max. voltage: 350 V AC, 100 V DC |
| On board status LEDs | Green — Power Red* — Relay ON Yellow — Optocoupler is active |
| * The junction box can be used for testing purposes as well. In case of correct wiring, after turning on the device, the relay will click and the red status led will light continuously until the trigger output is active. | |
| Box | Polycarbonate (IP65 rated) Cable outlets |
| Cable outlets | M16 cable glands (camera power, camera user, input power, user input / output) |
| Cable thickness | 4.5 mm – 10 mm |
| Mechanical dimensions | 120 mm × 80 mm (+ cable gland max 30 mm) × 85 mm |
| Temperature range | -40 °C – +80 °C |