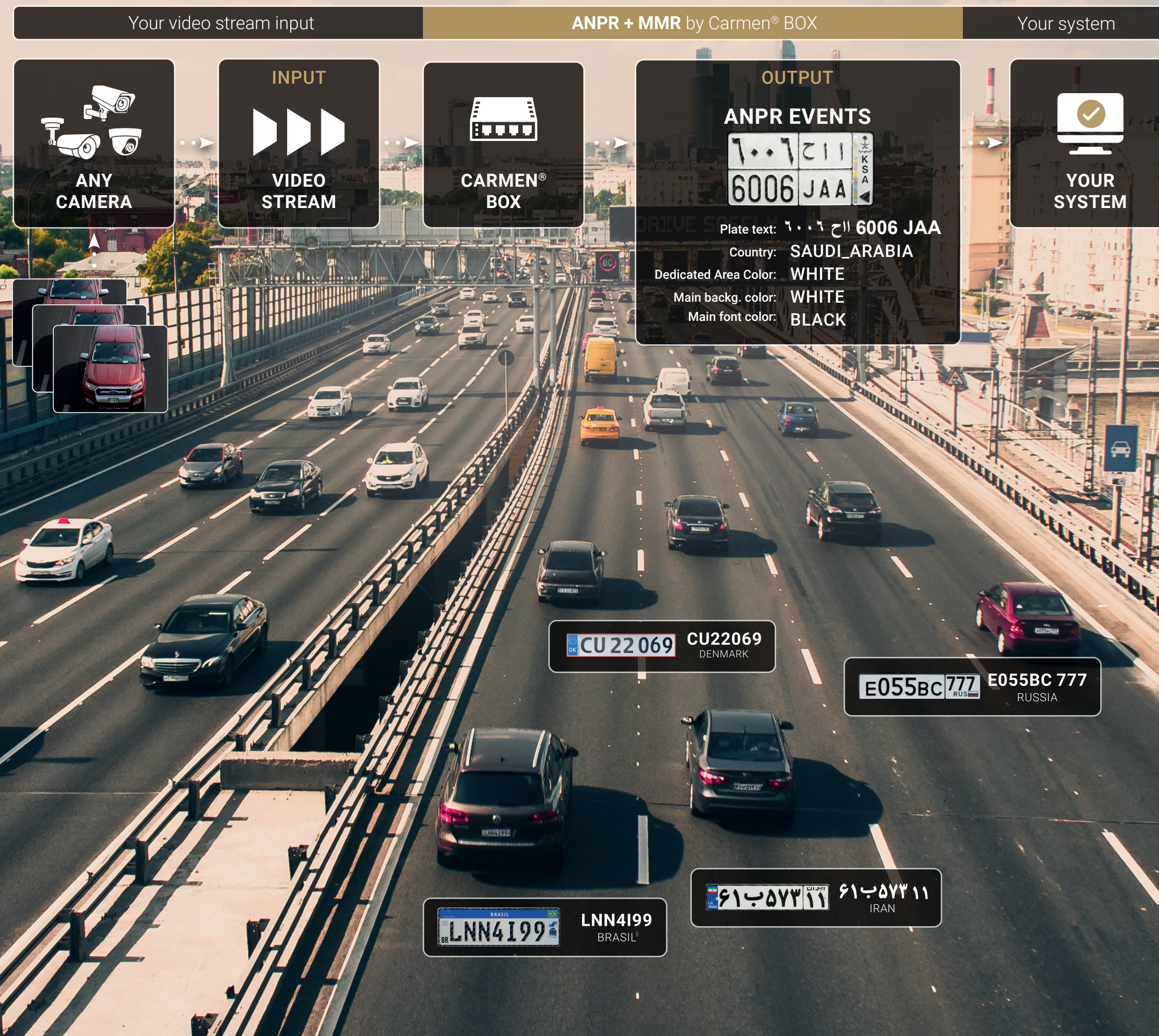


Add ANPR and MMR Data to Any Video Stream

CARMEN[®]

Carmen[®] Box for Video Streams of Any Source



Carmen[®] Box* is a standalone Plug & Play device that allows you to enhance your IP camera with license plate recognition function. Just connect Carmen[®] Box to your camera and the network to access license plate data and event-based video recordings through an easy-to-use interface.

* Based on NVIDIA[®] Jetson Nano[™]

Camera-Independence

Just connect any type of IP camera via a PoE cable to power it directly from Carmen[®] Box and get license plate data. You can even use an overview camera with ANPR optimized settings.

Video-Based Triggering

Carmen[®] Box selects the optimal images for ANPR for you from the H.264 video stream coming from the connected camera. NVIDIA[®] Jetson[™]'s GPU-accelerated plate detection allows you to find license plates and get them recognized in an instant.

Easy Installation and Handling

No servers, complicated installations, frequent maintenance, and expensive devices are needed. Place Carmen[®] Box wherever you want and manage your device through a single, simple interface. With the presets, you can always find the best predefined, purpose-based adjustments to make the most out of your Carmen[®] Box.

Carmen[®] Box

General Information

NNC	Built-in mini-PCIe card
Licensing	One year from purchase included, optional subscription available on yearly basis

Interface

Engine	Carmen [®] ANPR Image Carmen [®] ANPR Cloud
Input	Camera stream protocols: RTSP Camera stream format: H.264
Output formats	HTTP/HTTPS upload Data stream through API Internal database on web interface GDS upload
Output	ANPR data Number plate data in UNICODE text Location of each plate on one image Country/State/Province ID Time stamp Image (event and cropped license plate) Background color (optional) Character color (optional) Category of the plate (optional) MMR data (make, model, color)
Trigger	Via video-based, GPU-accelerated PlateFinder module or external software trigger via API call

Electrical Data

Power requirement	12V 5A DC
Power consumption typical	15W
Connectivity	LAN PoE (RJ45)
SD-card slot	User accessible
Storage options	MicroSD card M.2 M2280 NVMe SSD External drives via USB3

On-board Intelligence

Video analytics	PlateFinder module or external software trigger
-----------------	---

Mechanical Data

Internal operating temperature	-30°C – +60°C (-22°F - +140°F)
Dimensions (without bracket) (LxWxH)	148.6 x 129.8 x 34.6 mm (5.85" x 5.11" x 1.36")
In the box	Carmen [®] Box device, power supply (12V 5A), thermal pads (for M.2 SSD)

Technical specifications are subject to change without prior notice. This document does not constitute an offer.

Contact

ADAPTIVE RECOGNITION

www.adaptiverecognition.com



[Check Product Details](#)

[Request Information](#)

Adaptive Recognition global offices



Adaptive Recognition **America**



Adaptive Recognition **Nordic**



Adaptive Recognition **Hungary**



Adaptive Recognition **Singapore**

Disclaimer

The information contained in this brochure is provided as is and without any warranties of any kind, whether expressed or implied, including but not limited to, implied warranties of satisfactory quality, fitness for a particular purpose and/or correctness. The contents of this brochure is for general information purposes only and do not constitute advice. Adaptive Recognition does not represent or warrant that the information and/or specifications contained in this brochure are accurate, complete or current and specifically stipulate that certain scanner details and specifications contained in this brochure may differ in available models. Therefore, Adaptive Recognition makes no warranties or representations regarding the use of the content, details, specifications or information contained in this brochure in terms of their correctness, accuracy, adequacy, usefulness, timeliness, reliability or otherwise, in each case to the fullest extent permitted by law.