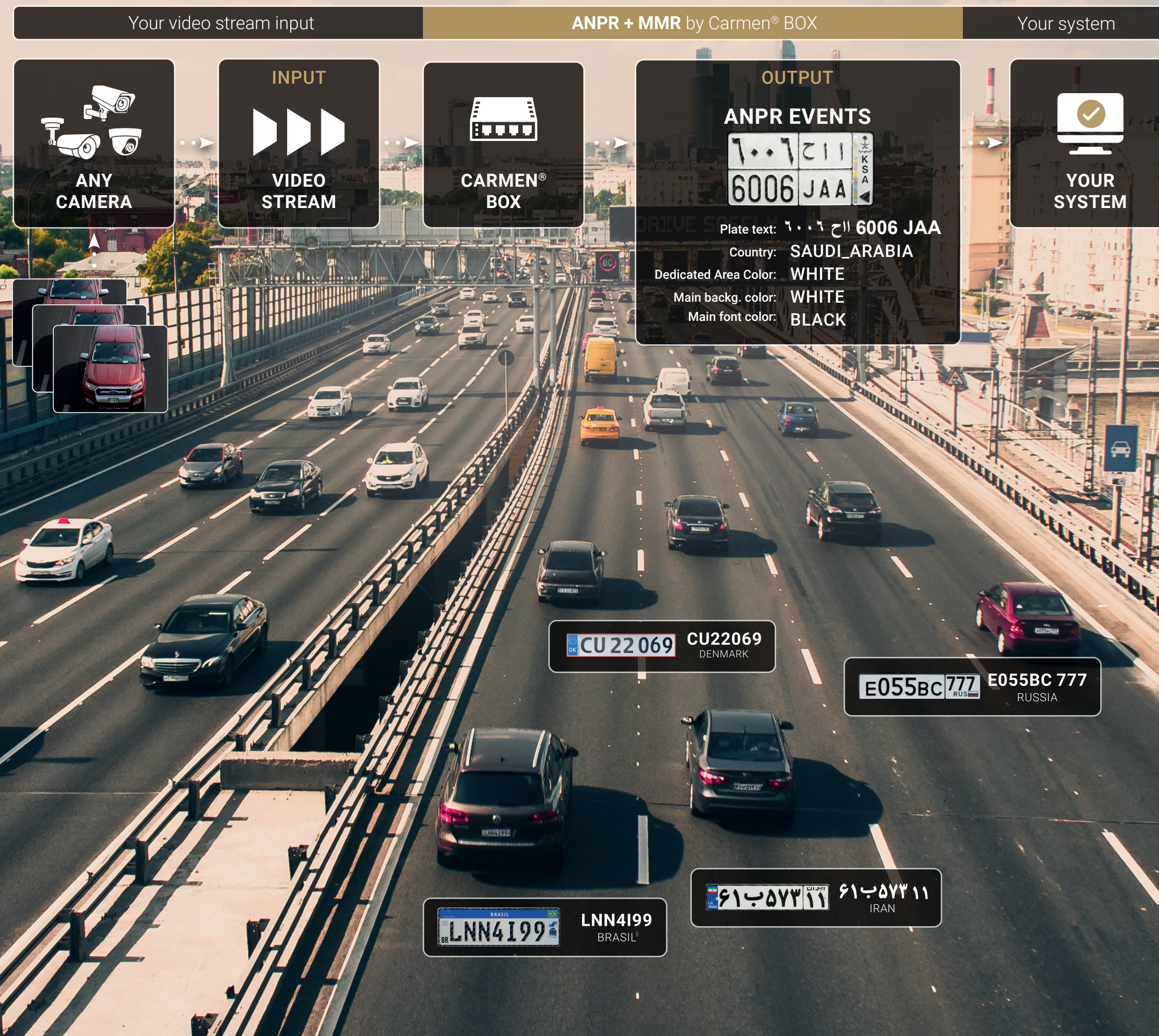


Add ANPR and MMR Data to Any Video Stream

CARMEN[®]

Carmen[®] Box for Video Streams of Any Source



Carmen[®] Box* is a standalone Plug & Play device that allows you to enhance your IP camera with license plate recognition function. Just connect Carmen[®] Box to your camera and the network to access license plate data and event-based video recordings through an easy-to-use interface.

* Based on NVIDIA[®] Jetson Nano[™]

Camera-Independence

Just connect any type of IP camera via a PoE cable to power it directly from Carmen[®] Box and get license plate data. You can even use an overview camera with ANPR optimized settings.

Video-Based Triggering

Carmen[®] Box selects the optimal images for ANPR for you from the H.264 video stream coming from the connected camera. NVIDIA[®] Jetson[™]'s GPU-accelerated plate detection allows you to find license plates and get them recognized in an instant.

Easy Installation and Handling

No servers, complicated installations, frequent maintenance, and expensive devices are needed. Place Carmen[®] Box wherever you want and manage your device through a single, simple interface. With the presets, you can always find the best predefined, purpose-based adjustments to make the most out of your Carmen[®] Box.

Powered by Carmen®

Onboard or Cloud-Based ANPR

With Carmen® Box, you receive your video stream with ANPR data already attached to it, courtesy of Adaptive Recognition's industry-leading Carmen® engine. There is the option to choose between an onboard Carmen® engine or connect to Carmen® ANPR Cloud that also provides make and model recognition (MMR).

Regardless of the chosen platform, Carmen® boasts outstanding confidence rates even with hard-to-read plates and global coverage: the trainable software is familiar with license plates used in 180+ countries worldwide. Wherever you are on the globe, Carmen® has you covered with reliable ANPR and MMR data—with free engine updates for the first year of operation.

CARMEN®

Smart and Simple Interface

Manage Devices and Get Events Rich of Information

The simple but smart interface called Device Tool allows easy handling of Carmen® Box. The Device Tool also allows you to find and easily update all Carmen® Boxes, thus providing constant and long-lasting operation for all of your devices.

The event packages contain a short video for better authenticity. They are all duly stored on the device, saved to an external source connected to Carmen® Box, or forwarded to another database via HTTP/FTP/GDS upload. All events contain the most important ANPR—and, optionally, MMR—data with the short video that can be played back any time.

Easy Integration

Smarten up Your Traffic Monitoring System

Carmen® Box was designed with convenience in mind. Aside from the easy handling and effortless management of the connected IP camera, Carmen® Box can be fully integrated into VMS (video management system) parking, and ERP (enterprise resource planning) systems via ONVIF/API support. There is also native support of GDS (Globessey Data Server), Adaptive Recognition's database middleware for event storage, analytics, and data visualization.

Just plug Carmen® Box in, and you can create an access control system without reconstruction and downtime using the stream of an overview camera or monitor traffic using an existing CCTV security system.



Carmen[®] Box

General Information

NNC	Built-in mini-PCIe card
Licensing	One year from purchase included, optional subscription available on yearly basis

Interface

Engine	Carmen [®] ANPR Image Carmen [®] ANPR Cloud
Input	Camera stream protocols: RTSP Camera stream format: H.264
Output formats	HTTP/HTTPS upload Data stream through API Internal database on web interface GDS upload
Output	ANPR data Number plate data in UNICODE text Location of each plate on one image Country/State/Province ID Time stamp Image (event and cropped license plate) Background color (optional) Character color (optional) Category of the plate (optional) MMR data (make, model, color)
Trigger	Via video-based, GPU-accelerated PlateFinder module or external software trigger via API call

Electrical Data

Power requirement	12V 5A DC
Power consumption typical	15W
Connectivity	LAN PoE (RJ45)
SD-card slot	User accessible
Storage options	MicroSD card M.2 M2280 NVMe SSD External drives via USB3

On-board Intelligence

Video analytics	PlateFinder module or external software trigger
-----------------	-------------------------------------------------

Mechanical Data

Internal operating temperature	-30°C – +60°C (-22°F - +140°F)
Dimensions (without bracket) (LxWxH)	148.6 x 129.8 x 34.6 mm (5.85" x 5.11" x 1.36")
In the box	Carmen [®] Box device, power supply (12V 5A), thermal pads (for M.2 SSD)

Technical specifications are subject to change without prior notice. This document does not constitute an offer.

Contact

ADAPTIVE RECOGNITION

www.adaptiverecognition.com



[Check Product Details](#)

[Request Information](#)

Adaptive Recognition global offices



Adaptive Recognition **America**



Adaptive Recognition **Nordic**



Adaptive Recognition **Hungary**



Adaptive Recognition **Singapore**

Disclaimer

The information contained in this brochure is provided as is and without any warranties of any kind, whether expressed or implied, including but not limited to, implied warranties of satisfactory quality, fitness for a particular purpose and/or correctness. The contents of this brochure is for general information purposes only and do not constitute advice. Adaptive Recognition does not represent or warrant that the information and/or specifications contained in this brochure are accurate, complete or current and specifically stipulate that certain scanner details and specifications contained in this brochure may differ in available models. Therefore, Adaptive Recognition makes no warranties or representations regarding the use of the content, details, specifications or information contained in this brochure in terms of their correctness, accuracy, adequacy, usefulness, timeliness, reliability or otherwise, in each case to the fullest extent permitted by law.