

# CARMEN® GO

PLUG & PLAY STREAM-TO-LPR SERVICE

A large, vibrant photograph of a modern cable-stayed bridge with a tall, white, A-shaped pylon and numerous yellow cables. The bridge spans a river and carries a multi-lane highway with cars and a bus. In the background, a city skyline with various skyscrapers is visible under a blue sky with scattered clouds. The "CARMEN® GO" logo is superimposed in the center of the image, with "CARMEN" in black and "GO" in orange with horizontal stripes.

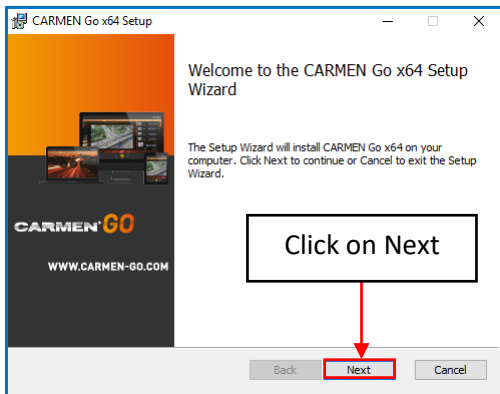
**CARMEN® GO**

QUICK GUIDE

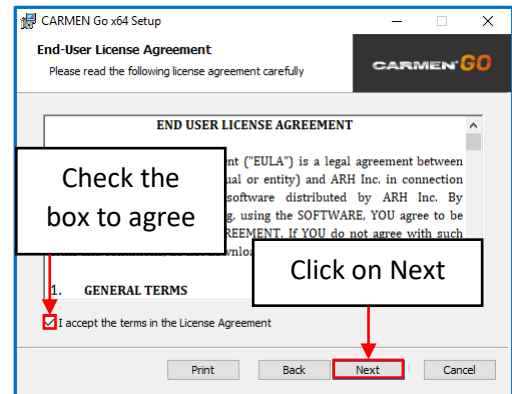
# 1. INSTALL THE APPLICATION WITH THE DOWNLOADED MSI PACKAGE

- Install CARMENGoInstaller\_x64\_xxx.msi

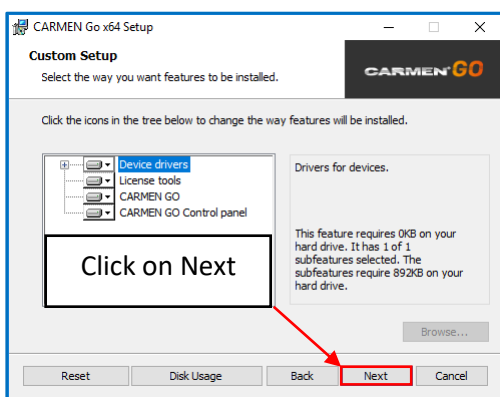
1.



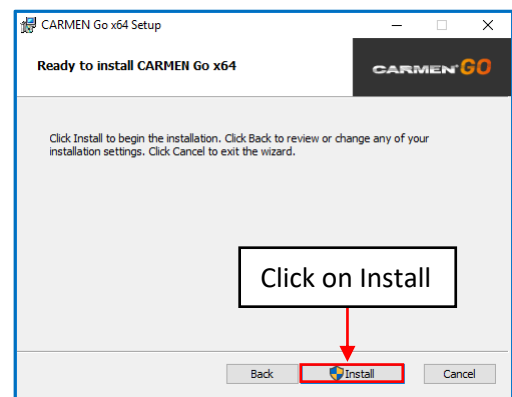
2.



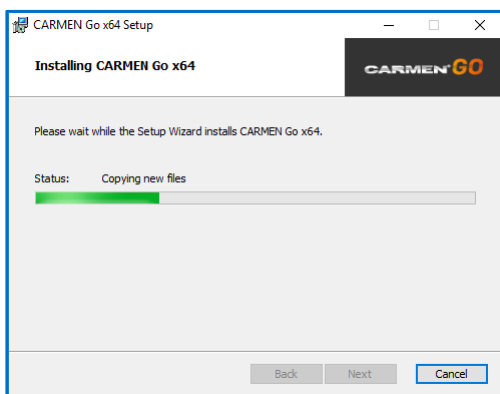
3.



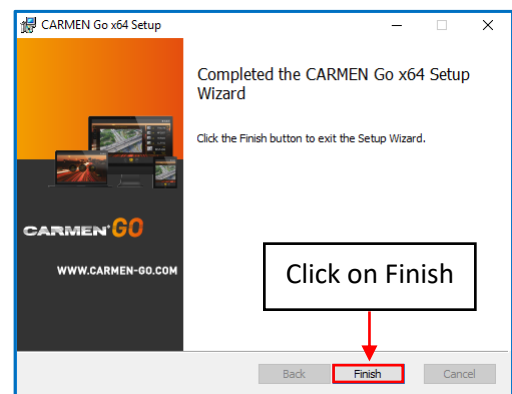
4.



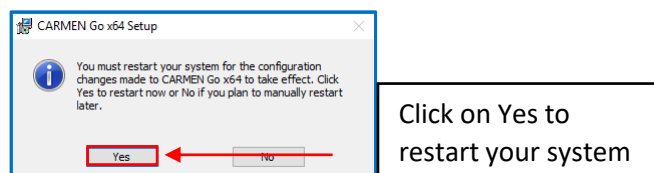
5.



6.



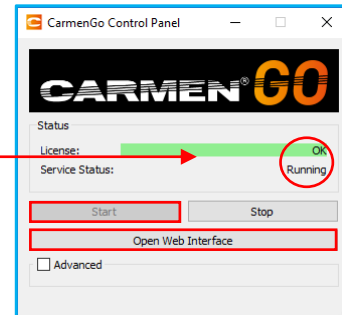
7.



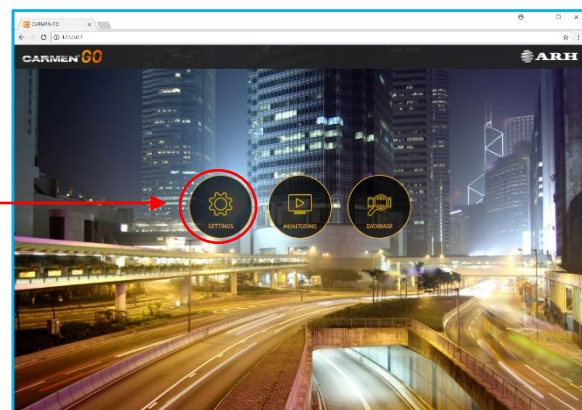
## 2. START THE USER INTERFACE

Connect the USB Hardware key

- Go to Windows Start menu
- Find and run CARMEN®GO Control Panel
- If "Service status" is "Stopped"
- Click on "Start"
- Click on "Open Web Interface"



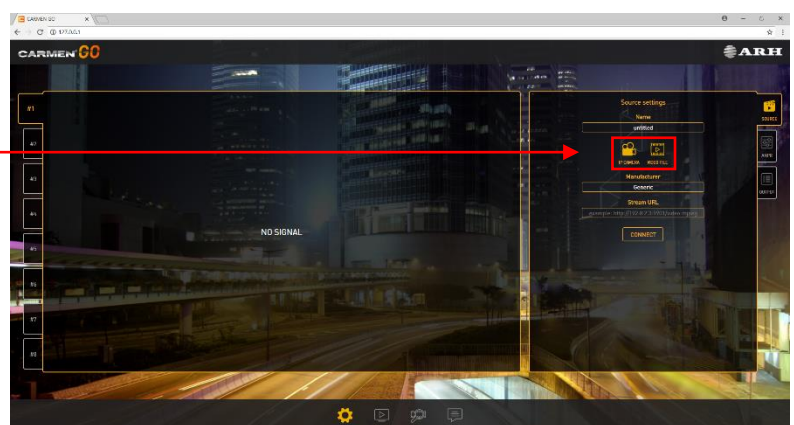
- Default browser will pop up with the Main screen
- Select "Settings" menu



It is recommended to click on "Settings" icon first and you may go on to "Monitoring" when you have already added your input source.

In "Source settings" select from the 2 options:

- IP Camera
- Video File

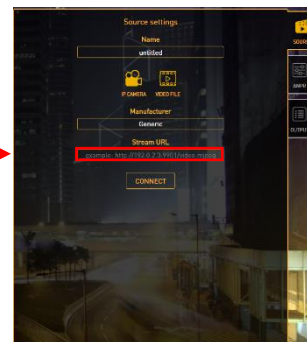


### 3. SET UP SOURCES WITH A FEW CLICKS

#### IP CAMERA SETTINGS:

- Under "Settings", select the "IP Camera" option and type in the URL address of your camera stream.
- Live view is now visible on the screen.

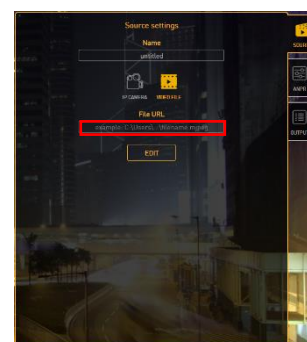
Copy or type in the URL of the camera and click on "Connect".



#### VIDEO FILE SETTINGS:

- Copy URL of video file and paste it in the "File URL" field.

Click on "Edit" and then copy or type in the URL of the video file.



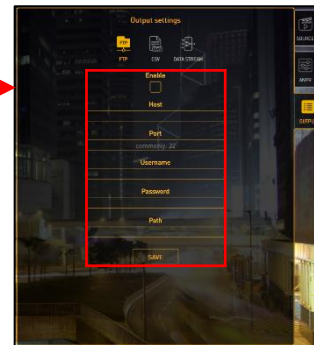
## 4. SET UP OUTPUTS IN A FEW CLICKS

- Under "Settings", select the "Outputs" submenu on the right side.

### FTP SERVER:

Here you may enable transferring data to an FTP server.

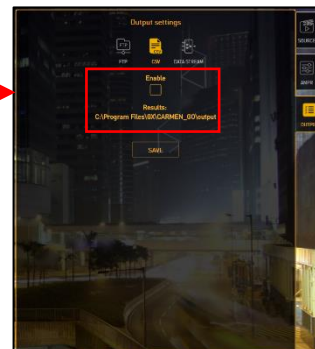
Fill in all fields, check the "Enable" box and press "Save" to start transfer.



### CSV FILE:

Here you may enable saving data to a CSV file.

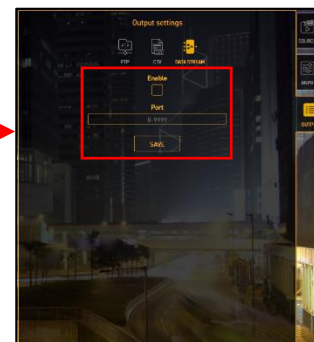
Just check the "Enable" box to receive data. Find it in the assigned folder which is shown under "Results".



### DATA STREAM:

Here you may enable event transfer to an external server.

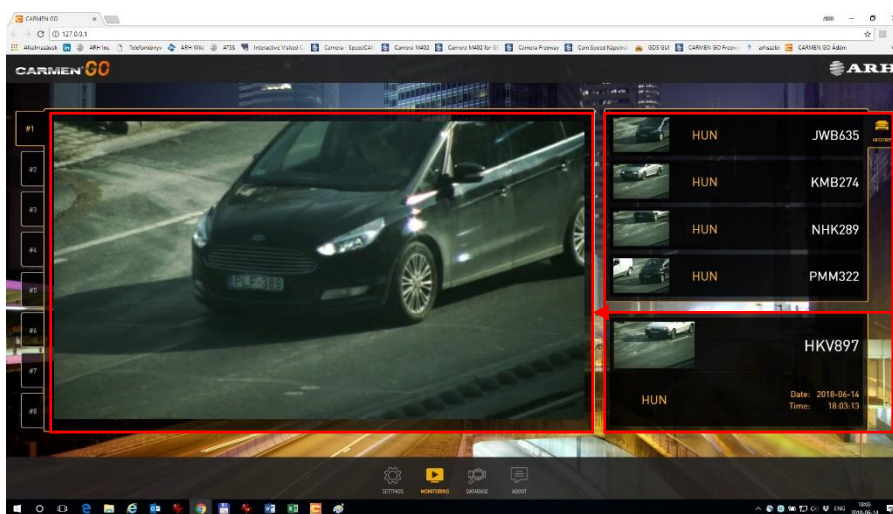
Copy or type in the proper Port number and click on "Save".



## 5. ENJOY CARMEN®GO (MONITORING AND BROWSE HISTORY)

### MONITORING:

- With IP Camera(s) connected or Video File(s) loaded, the processing of stream(s) started. "Monitoring" shows detected events. All data is automatically recorded into the internal database.

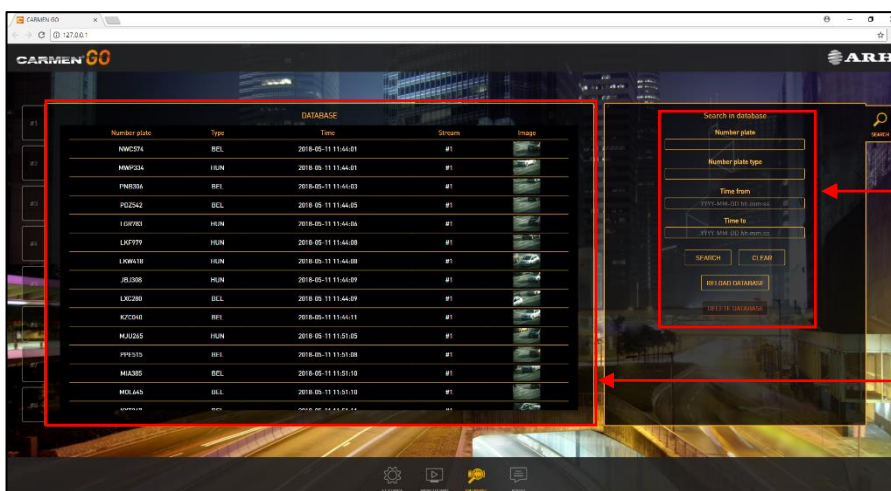


Recorded events

Live view

### DATABASE:

- All captured events and recorded data are available for review in this menu. Search by number plate, type or time. You can reload database and delete database.



You can search, reload and delete in the Database history

Database with events